

9

8

7

6

5

4

3

2

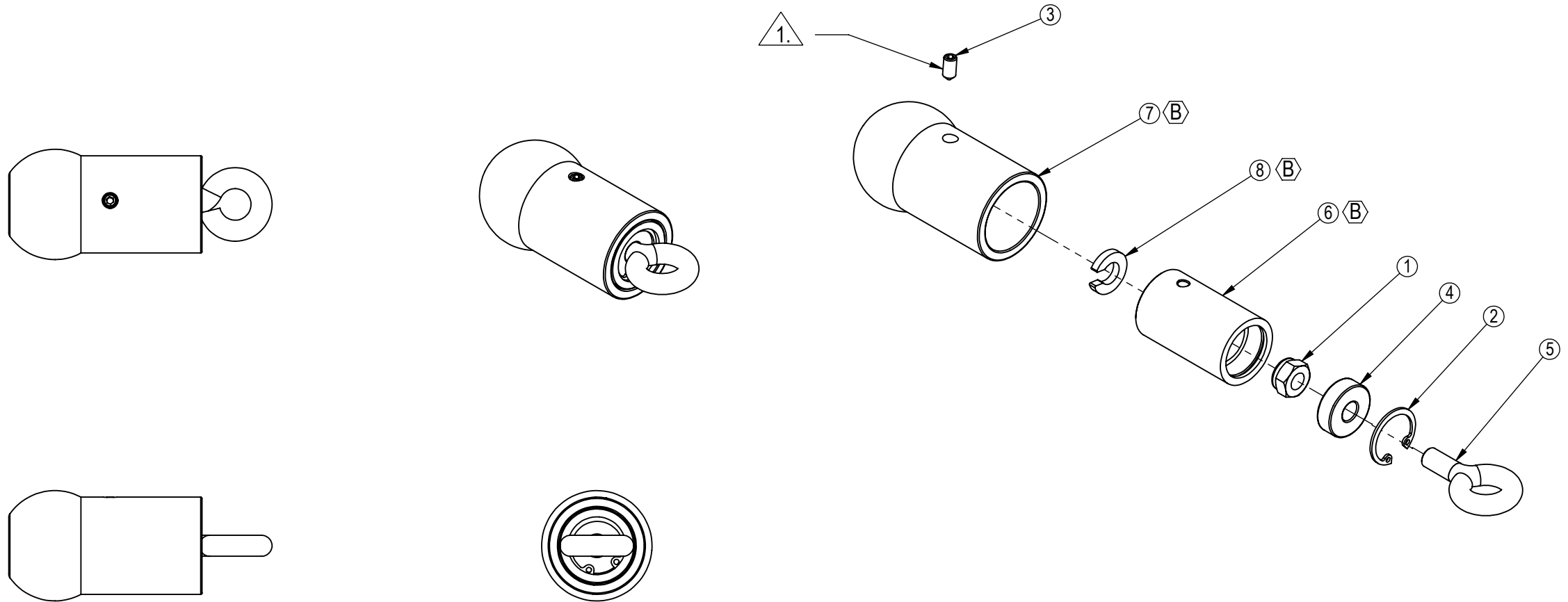
1

NOTES:

1. REQUIRES THREAD LOCKER TO BE APPLIED, LOCTITE 243 OR ENGINEERING APPROVED EQUIVALENT. THREAD LOCKER TO BE APPLIED TO CLEAN THREADS AS PER MANUFACTURES REQUIREMENT.

REVISION HISTORY

REV	DATE	DESCRIPTION	ECO	BY
A	12/10/2010	RELEASE FOR PRODUCTION	----	LA
B	2/8/2012	IS 731-3210 WAS 731-2444, IS 731-3211 WAS 731-2441, IS 731-5057 (NEW PART TO THIS ASSEMBLY)	13653	CLK



ITEM NO.	PART NUMBER	DESCRIPTION	QTY.
1	731-0365	NUT,M8 X 1.25,NYLOC JAM	1
2	731-2439	RETAINER,RING,22MM	1
3	731-2440	SCREW,M5,10mm,FPS,HE,AS, BO	1
4	731-2442	BEARING,M8 ID,22 OD,7 THK	1
5	731-2443	BOLT,EYE,M8	1
6	731-3210	BODY,SWIVEL,HANDLE,MS	1
7	731-3211	COVER,WEAR,SWIVEL,MS	1
8	731-5057	CLIP,CABLE RETAINER	1

NOTICE OF PROPRIETARY INFORMATION

THIS DOCUMENT SHALL NOT BE REPRODUCED NOR
SHALL THE INFORMATION CONTAINED HEREIN BE USED
BY OR DISCLOSED TO OTHER EXCEPT AS EXPRESSLY
AUTHORIZED BY CORE INDUSTRIES, INC., D.B.A. STAR TRAC.

DOCUMENT STATUS:

CLASS OF WORK		UNLESS OTHERWISE SPECIFIED DIMS ARE IN mm. TOLERANCES FOR MEASURE OF LENGTH ARE:						ANGLES = $\pm 2^\circ$	
		0.5 to 3	> 3 to 6	> 6 to 30	> 30 to 120	> 120 to 400	> 400 to 1000	> 1000 to 2000	> 2000
FINE		± 0.05	± 0.05	± 0.1	± 0.15	± 0.2	± 0.3	± 0.5	----
MEDIUM	X	± 0.1	± 0.1	± 0.2	± 0.3	± 0.5	± 0.8	± 1.2	± 2
COARSE		± 0.2	± 0.3	± 0.5	± 0.8	± 1.2	± 2	± 3	± 4
VERY COARSE		----	± 0.5	± 1	± 1.5	± 2.5	± 4	± 6	± 8

MATERIAL	N/A
----------	-----

FINISH	
N/A	

VENDOR: N/A

P/N: N/A

THIRD ANGLE PROJECTION



CORE INDUSTRIES, INC. DBA



14410 Myford Road
Irvine CA 92606

STARTRAC PART NO

731-3209

REV

B

TITLE	ASSY,SWIVEL,HANDLE,MS
-------	-----------------------

SCALE: 1:2

SHEET 1 OF 1

SHEET SIZE: B

9

8

7

6

5

4

33

2

1